



RESEARCH ARTICLE

Lethality Assay of *Ficus religiosa* Leaves: An Indian Herb

Palshikar Gautam^{1*}, Gadhwe Sandeep², Mali Prashant², Mehta Preeti³, Phadtare Ganesh⁴

Abstract

For the treatment of cancerous cells in human body it needs to detect such medicine that kills the carcinoma cells without any adverse effects on human body. The anti-cancer drugs used previously exhibited relatively high toxicity not only to the tumour cells but also to the normal cells of the body part in which the cancer had developed. Currently assessment of pharmacological properties of plant has become one of the significant basic studies in biomedical sciences in recent years. In this context the present study was undertaken to evaluate the effect of *Ficus religiosa* plant leaves extract for cytotoxic study to calculate LD 50 value by using brine shrimp lethality (BSL) assay experimental method. The current research work was aimed to check the preliminary stage In-vitro cytotoxicity and anticancer activity of *Ficus religiosa* plant leaves with the help of Brine shrimp lethality bioassay experimental method. We concluded that if concentration of drug increases % Inhibition of cell line is also increases. The LD 50 value of the plant was found to be 61.06 µgm. It would be beneficial effects as anticancer use due to the easiness and low cost of *Ficus religiosa* leaves maintenance. This could accommodate the usage of this medicinal plant as anti- cancer. However, further study is needed to investigate the other anti-cancer mechanism of leaf extract.

Keywords: ADR, Anticancer, Brine Shrimp, Cytotoxicity, *Ficus religiosa*.

Introduction

In carcinogenic condition there is drastic increase in growth of cells and which is out of control (B. N. Meyer *et al.* 1982). The growth and multiplication can be occur in body and develops many cells and tissues (S. B. Chandrasekar *et al.* 2010). Generally, body cells form, develop and multiply (through a process called cell division) and shows formation

of newer cells (Ayurvedic Pharmacopeia Of India, 2001). After some time new cells get old, damage and died and again forms newer cells (Prasad P *et al.* 2006). Sometimes abnormal or damaged cells grow and multiply instead of orderly process breaks down (Swami and Bisht 1996). These cells may form tumors, which are lumps of tissue (Bajracharya and Tuladhar (2011). Tumors can be cancerous or not cancerous (benign) (Quazi *et al.* 2017). Cancerous tumors spread into, or invade, nearby tissues and can travel to distant places in the body to form new tumors (a process called metastasis) (Carballo *et al.* 2002). Cancerous tumors may also be called malignant tumors (Saliba and Krzyz 1976). Many cancers form solid tumors, but cancers of the blood, such as leukemias, generally do not (Maity *et al.* 2017). Benign tumors do not spread into, or invade, nearby tissues (Shaikh *et al.* 2020). When removed, benign tumors usually don't grow back, whereas cancerous tumors sometimes do (Sahira Banu and Cathrine (2015). Benign tumors can sometimes be quite large, however (Kooti *et al.* 2017). Some can cause serious symptoms or be life threatening, such as benign tumors in the brain (Makhija *et al.* 2010).

Although, despite advances in surgical and radiation treatments, chemotherapy continues to be an important therapeutic option for different malignancies, especially for the primary, advanced and metastatic tumors (Enit *et al.* 2018). However, the efficacy of chemotherapy is substantially

¹Genba Sopanrao Moze College of Pharmacy, Wagholi, Pune-412207 Maharashtra, India.

²Sinhgad College of Pharmacy, Vadgaon Budruk, Pune- 411041, Maharashtra, India.

³Navsahyadri Institute of Pharmacy, Pune- 412213, Maharashtra, India.

⁴Indrayani Institute of Pharmaceutical Education and Research, Pune, Maharashtra, India.

***Corresponding Author:** Palshikar Gautam, Genba Sopanrao Moze College of Pharmacy, Wagholi, Pune- 412207 Maharashtra, India, E-Mail: drgautampalshikar@gmail.com

How to cite this article: Gautam, P., Sandeep, G., Prashant, M., Preeti, M., Ganesh, P. (2024). Lethality Assay of *Ficus religiosa* Leaves: An Indian Herb. *J. Indian bot. Soc.*, Doi: 10.61289/jibs2024.07.05.0255

Source of support: Nil

Conflict of interest: None.

limited by the intrinsic and acquired resistance of cancer cells to anticancer drugs (Khandelwal and Sethi 2007). Resistance to chemotherapy is due to the variety of factors such as individual variations in patients (e.g. age, gender) and genetic differences in tumors (Choudhari *et al.* 2011). The most common reason of resistance to drugs is the change in the expression of one or more energy-dependent transporters, insensitivity to drug-induced apoptosis and induction of drug-detoxifying effect (Purnamasari *et al.* 2019).

Chemotherapy is used for the whole-body treatment of recurrent tumors using conventional anticancer drugs which lead to serious clinical side effects (Finney 1952). The side effects are mainly associated with the high dose, non-specific distribution severe toxicity to the normal cells, inadequate drug concentrations at tumours or cancerous cells, and the development of multidrug resistance (Niksic *et al.* 2021). Therefore, continuous research for improved anti-cancer therapies that can selectively target tumour cells with minimal side effects on normal tissues is going several approaches like immunotherapy, thermal therapy, phototherapy and gene therapy have been recently developed and tested for the suppression of such resistance (Nerdy *et al.* 2021).

Adverse Drug Reactions of Anticancer Drugs (Sung H *et al.* 2021) –

- Anemia, Appetite Loss, Bleeding and Bruising (Thrombocytopenia)
- Constipation, Delirium, Diarrhea, Edema (Swelling), Fatigue
- Fertility Issues in Boys and Men, Fertility Issues in Girls and Women
- Flu-Like Symptoms, Hair Loss (Alopecia), Infection and Neutropenia
- Lymphedema, Memory or Concentration Problems, Mouth and Throat Problems
- Nausea and Vomiting, Nerve Problems (Peripheral Neuropathy)
- Organ-Related Inflammation and Immunotherapy, Pain,
- Sexual Health Issues in Men, Sexual Health Issues in Women,

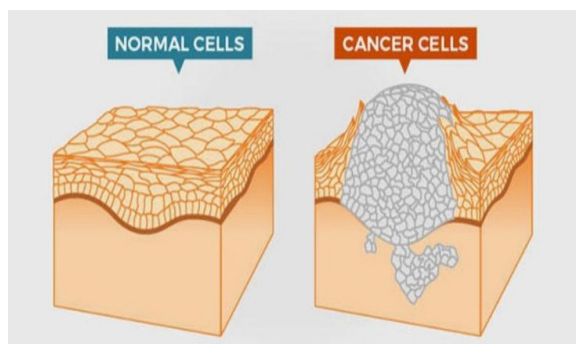


Figure 1: Cancer cells growth

- Skin and Nail Changes, Sleep Problems, Urinary and Bladder Problems

Classification of Anticancer Drugs

Brine shrimp assay/test [24]

It has been proven that the brine shrimp lethality test (BSLT) has a good correlation with cytotoxic activity in some human solid tumors. Application of BSLT in cytotoxic assays has been described for several herbal plants. Although the BSLT is able to identify strong anticancer activity of tested compound, its main limitation is its sensitivity to distinguish between strong to moderate and weak anti-cancer potentials. Therefore, the BSLT represents a screening tool for potential cytotoxins, but a more sensitive distinction of anticancer activity requires testing on human cancer cells.

The brine shrimp (*Artemia salina*) lethality test (BSLT) method is often used to detect the presence of compounds that have cytotoxicity in the process of active compounds isolation from natural materials by determination of the lethal concentration 50% (LC50) value. Based on the preliminary studies, the researchers are interested in using the brine shrimp lethality to measure the cytotoxicity of herbal plant anticancer potential.

Materials And Methods

Collection

All required *Ficus religiosa* plant leaves were collected from the local area. After collection of the required plant leaves for the study was washed with water for removing the dirt on the plant leaves surfaces. After this all leaves were kept for the drying.

Authentication

About 10 gm of *Ficus religiosa* plant leaves sample authenticated from the Botanist Dr. B. B. Dixit (Shamantak Enterprises). The authentication report/ certificate is attached in the following next page.

Drying

All collected *Ficus religiosa* leaves shade dried for the 7 days i.e. 1 week. In the process of the shade drying of the leaves in that all moisture were present in the *Ficus religiosa*

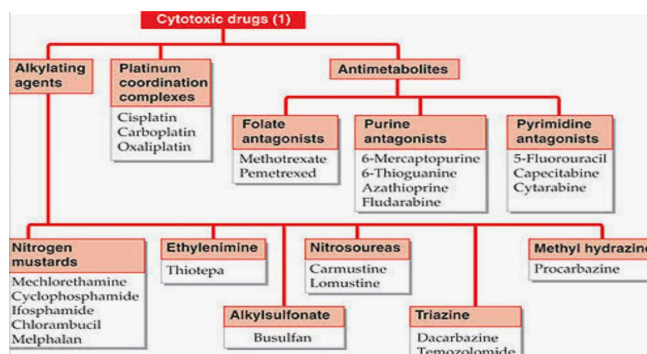


Figure 2: Classification of Anticancer Drug

Table 1: percent inhibition rate of ficus religiosa extract on nauplii after 24 hours

Con. of extract	Brine Shrimp Taken	Brine Shrimp Survived After 24Hr		Total Shrimp Survived	%Inhibition
		T1	T2		
10	10	9	8	17	15
20	10	8	7	15	25
30	10	7	6	13	35
40	10	6	6	12	40

leaves were eliminated. After drying of the leaves converted into the coarse form for the extraction purpose.

Extraction - Decoction –This method is used for the extraction of the water soluble and heat stable constituents from crude drug by boiling it in water for 20 - 40 minutes, cooling, straining and passing sufficient cold water through the drug to produce the required volume (Sahira Banu K., Dr. Cathrine L. (2015). The decoction method for the extraction of the Ficus religiosa plant leaves contain the boiling of coarse powder of the leaves with distilled water for 45 min. After cooling of liquid it filtered and stored at cool and dry place.

- Water taken – 400 ml, Crude powder taken – 25 gm
- Ratio followed – 1 : 16, Heating time – 45 min
- Extract remained after boil – 205 ml, Store condition - 3 to 4 Degree Celsius

Brine Shrimp Lethality Assay

Brine shrimp lethality assay is an important tool for the preliminary cytotoxicity assay of plant extract and others based on the ability to kill a laboratory cultured larvae (nauplii). The nauplii were exposed to different concentrations of plant extract for 24 hours. The number of motile nauplii was calculated for the effectiveness of the extract. It is a simple, cost effective and requires small amount of test material. The larvae (nauplii; singular nauplius), about 22 mm long, are large enough to observe without high magnification and small enough for hatching in enormous amount without extensive workspace in a laboratory.

This assay was first proposed by Michael et al. in 1956. Subsequently, it was further developed by others. This lethality assay has been successively employed as a bioassay guide for active cytotoxic and antitumor agents in 1982 (Meyer et al., 1982). For the bioactive compound of either natural or synthetic origin, this is a rapid and comprehensive test. It is also an inexpensive and simple test as no aseptic techniques are required. It easily utilizes a large number of organisms for statistical validation and requires no special equipment and relatively small amount of sample (2-20 mg or less) is necessary.

Materials Required

- Rectangular glass jar or glass bowl, Measuring cylinder (1000 mL)

- Table salt (27 g), Spatula, Brine shrimp eggs, Air pump & air stone with air controller
- Analytical balance, Pipette, Light source, Glass petriplates
- Test tubes, Magnifying glass, Test sample of plant extract

Protocol

Hatching brine shrimp

- Measure 3 liters of water using measuring cylinder and pour into the rectangular jar
- Weigh about 27 g of table salt by an balance and add it into the jar containing water
- Mix the water with a spatula
- Place the tip of an airline from an air pump into the bottom of the jar maintaining proper aeration
- Add about brine shrimp eggs at the top water level of the jar and mix with the water
- Switch on a light (60-100 Watt bulb) placed a few inches away from the jar
- After 20-24 hours, the nauplii will hatch
- Observe the eggs and nauplii
- Collect the nauplii after the next 24 hours
- Hatched nauplii must be separated from the empty egg. It can be done by turn off the air and switch off the lamp. The empty egg will float while the brine shrimp will concentrate in the water column.
- Transfer 10 nauplii to a test tube using a pipette

Toxicity testing

- Expose the nauplii to different concentrations of the plant extract
- Count the number of survivors and calculate the percentage of death after 24 hours.

Result And Discussion

If concentration of drug increases from 10% to 40% Inhibition of cell line is also increases with probit value from 3.96 to

Table 2: Percent values in probit value

Con. of extract	log C	%Inhibition	Probit value
10	1	15	3.96
20	1.301029996	25	4.33
30	1.477121255	35	4.61
40	1.602059991	40	4.75

Table 3: Probit value table

%	0	1	2	3	4	5	6	7	8	9
0	-	2.67	2.95	3.12	3.25	3.36	3.45	3.52	3.59	3.66
10	3.72	3.77	3.82	3.87	3.92	3.96	4.01	4.05	4.08	4.12
20	4.16	4.19	4.23	4.26	4.25	4.33	4.36	4.39	4.42	4.45
30	4.48	4.50	4.53	4.56	4.59	4.61	4.64	4.67	4.69	4.72
40	4.75	4.77	4.80	4.82	4.85	4.87	4.90	4.92	4.95	4.97
50	5.00	5.03	5.05	5.08	5.10	5.13	5.15	5.18	5.20	5.23
60	5.25	5.28	5.31	5.33	5.36	5.39	5.41	5.44	5.47	5.50
70	5.52	5.55	5.58	5.61	5.64	5.67	5.71	5.74	5.77	5.81
80	5.84	5.88	5.92	5.95	5.99	6.04	6.08	6.13	6.18	6.23
90	6.28	6.34	6.41	6.48	6.55	6.64	6.75	6.88	7.05	7.33
--	0.0	0.1	0.2	0.3	0.4	0.5	0.6	0.7	0.8	0.9
99	7.33	7.37	7.41	7.46	7.51	7.58	7.65	7.75	7.88	8.09

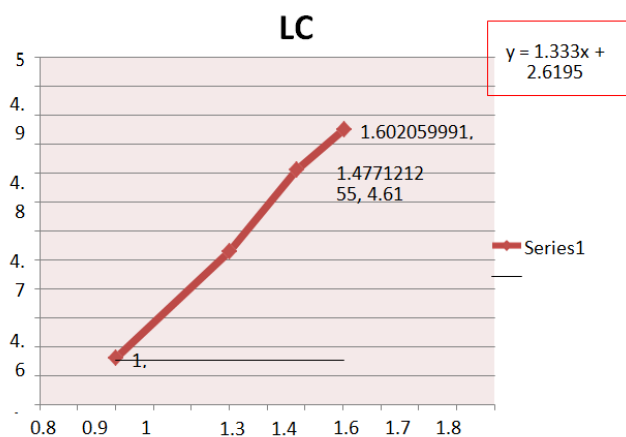


Figure 3: Scatter linear graph of observations in that probitvs log C and Showing the equation

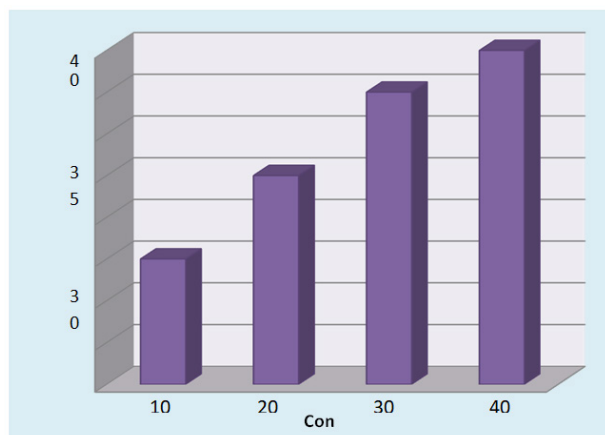


Figure 4: Statistical analysis of results - 3D bar graph of observations in that percent inhibition vs concentration

4.75 (Table 2 and 3). Scatter linear graph of observations in that probits log C and Statistical analysis of results - 3D bar graph of observations are observed (Fig. 3 and 4).

Calculations

$y = 1.333x + 2.6195$ (i)

$R^2 = 0.997$

$y = mx + c, y = 5.0$ (for LD 50), $X = (y - c) / m, X = (5.0 - 2.6195) / 1.333,$

$X = 1.785821, \text{Anti Log } X = \text{LD } 50, \text{Anti Log } X = 61.0690269$

$\text{LD } 50 = 61.06 \mu\text{g}$

The lethal dose (LD50) Of *Ficus religiosa* plant leaves was found to be LD 50 = 61.06 μg by Lethality Assay.

The outcome of this research of lethality assay of *Ficus religiosa* leaves have provided insight of cytotoxic potential in nauplii of brine shrimp after 24 hrs observations are discussed for the herbal anticancer activity. The traditional regular medications of anticancer drugs causes the serious ADR on the human but herbal drugs not cause any serious ADR are also discussed. Future advanced study required to know API for cytotoxicity in the *Ficus religiosa* extract are also discussed in this experimental design of *Ficus religiosa* assay by brine shrimp method.

Conclusion

The current research work was aimed to check the preliminary stage In-vitro cytotoxicity and anticancer activity of *Ficus religiosa* plant leaves with the help of Brine shrimp lethality bioassay experimental method. We concluded that if concentration of drug increases % Inhibition of cell line is also increases. The LD 50 value of *Ficus religiosawas* found to be 61.06 μgm . It would be beneficial effects as anticancer use due to the easiness and low cost of *Ficus religiosa* leaves maintenance. This could accommodate the usage of this medicinal plant as anti-cancer. However, further study is

needed to investigate the other anti-cancer mechanism of leaf extract. Hence, the *Ficus religiosa* leaves may be useful in discovery for its anticancer potential, further investigation is required to understand the possible mechanism of API in leaves which responsible for its cytotoxicity.

Acknowledgments

Sincere gratitude should be expressed to Shamantak Enterprises for authentication of plant samples. NES's Navsahyadri Institute of Pharmacy, Pune and Genba Sopanrao Moze College of Pharmacy, Pune for providing laboratory facilities to perform the research work.

Disclosure of Conflict of Interest

The authors declare that the research was conducted in absence of any conflict of interest. This research did not receive any specific grant from funding agencies in the public, commercial or not for profit sectors.

References

- Apratim M, Bisoi PC, Das AB, Maiti P and Senapati MR (2017), Cytotoxicity Study Of *Ficus Religiosa* Leaf Extract Against Jurkat Cell Line, *Explor Anim Med Res.* **7 (1)**: 18-21.
- Shaikh A, Patel M and Padul M() Anticancer Potential Of *Ficus religiosa* (Linn) Against Human Breast Cancer Cell Line Mda-Mb-231 And Its Phytoconstituents By HPLC-MS, Research Square, Page 21, Doi.Org/10.21203/Rs.3.Rs-132206/V1.
- Ayurvedic Pharmacopeia Of India. Ministry Of Health And Family Welfare, Department Of Ayush, New Delhi 2001. 17-20.
- Carballo JL, Hernández-Inda ZL, Perez P and García-Grávalos MD. (2002). A Comparison Between Two Brine Shrimp Assays To Detect *In Vitro* Cytotoxicity In Marine Natural Products. *Bmc Biotechnol* 17.
- Chandrasekar SB, Bhanumathy M, Pawar AT and Somasundaram T (2010). Phytopharmacology Of *Ficus Religiosa*, *Pharmacognosy.* **4 (8)**: 199.
- Choudhari AS, Suryavanshi SA, Ingle H and Kaul E (2011). Evaluating The Antioxidant Potential Of Aqueous And Alcoholic Extracts Of *Ficus Religiosa* Using Orac Assay And Assessing Their Cytotoxic Activity In Cervical Cancer Cell Lines. *Biotechnol Bioinf Bioeng*:443–50.
Doi: 10.1038/S41598-021-92679-X.
- Khandelwal KR, Sethi Vrunda K (2008). Practical Pharmacognosy Techniques And Experiments, Nirali Prakashan; 25.1 - 25.8 .
- Enit BD, Arumugam VA, Palanisamy SK, Vinayagamoorthy P and Basavaraju P (2018). Phytochemistry and Pharmacology of *Ficus Religiosa*. *Sys Rev Pharm*: 45- 8.
- Finney DJ (1952). Probit Analysis A statistical treatment of the sigmoid response curve, 2nd ed. Cambridge University Press
- Gan BB and Sarbajna MT (2011). Brine-Shrimp Bioassay For Assessment Of Anticancer Property Of Essential Oils From Spices, *Nepal Journal Of Science And Technology* **12**: 163-170.
- Kooti W, Servatyari K, Behzadifar M, Samani MA, Sadeghi F, Nouri B and Zare Marzouni HZ. (2017). Effective Medicinal Plant In Cancer Treatment, Part 2: Review Study. *J. Evidence-Based Complementary Alternative Medicine*; 982–95.
- Makhija IK, Sharma IP and Khamar D (2010). Phytochemistry And Pharmacological Properties Of *Ficus Religiosa*: An Overview. *India Annals Of Biological Research* 171- 80.
- Meyer BN, Ferrigni NA, Putnam JE, Jacobsen LB, Nichols DE and Mclaughlin JL (1982). Brine Shrimp: A Convenient General Bioassay For Active Plant Constituents, *J. Med. Plant Res.* **45**: 31-34.
- Nerdy N, Puji L, Jon P, Sinaga SG, Nilsya FZ and Tedy KB (2021), Brine Shrimp (*Artemia Salina* Leach.) Lethality Test Of Ethanolic Extract From Green Betel (*Piper Betle* Linn.) And Red Betel (*Piper Crocatum* Ruiz And Pav.) Through The Soxhletation Method For Cytotoxicity Test, Open Access *Macedonian J. Med. Sci.* **9(A)**: 407- 412. Doi.Org/10.3889/Oamjms.2021.6171.
- Niksic H, Becic F, Koric E, Gusic I, Omeragic E, Muratovic S, Miladinovic B and Duric K (2021). Cytotoxicity Screening Of *Thymus Vulgaris* L. Essential Oil In Brine Shrimp Nauplii And Cancer Cell Lines. *Sci Rep.* 13178.
- Prasad P, Subhakthe P, Narayana A and Rao M (2006). Medico Historical Study Of —Asvattha (Sacred Fig Tree). *Bull Indian Inst Hist Med Hyderabad*; **36**:1-20.
- Purnamasari R, Winarni D, Permanasari A, Agustina E, Hayaza S and Darmanto W (2019). Anticancer Activity Of Methanol Extract Of *Ficus* Leaves And Fruits Against Proliferation, Apoptosis, And Necrosis In Huh7it Cells. *Cancer Inform*; 1–7.
- Quazi SS, Fatema CA And Mir Misbahuddin (2017). Brine Shrimp Lethality Assay, Bangladesh J. Pharmacol. 186-189.
- Sahira B and Cathrine L (2015), General Techniques Involved In Phytochemical Analysis, *Int.I J. Adv. Res. In Chem.I Sci.* **2 (4)**: 25-32.
- Saliba LJ and Krzyz RM (1976). Effect Of Heavy Metals On Hatching Of Brine-Shrimp Eggs. *Marine Poll Bull*: 181-82.
- Sung H, Ferlay J, Siegel RL, Laversanne M, Soerjomataram I, Jemal A and Bray F (2021). Global Cancer Statistics 2020: Globocan Estimates Of Incidence And Mortality Worldwide For Cancers In 185 Countries. *Ca Cancer J Clin.*; 71(3); 209- 49. Doi. Org/10.3322/Caac.21660 Pmid:33538338.
- Swami KD and Bisht NP (1996). Constituents Of *Ficus Religiosa* And *Ficus Infectoria* And Their Biological Activity. *J Indian Chem Soc.* 631.